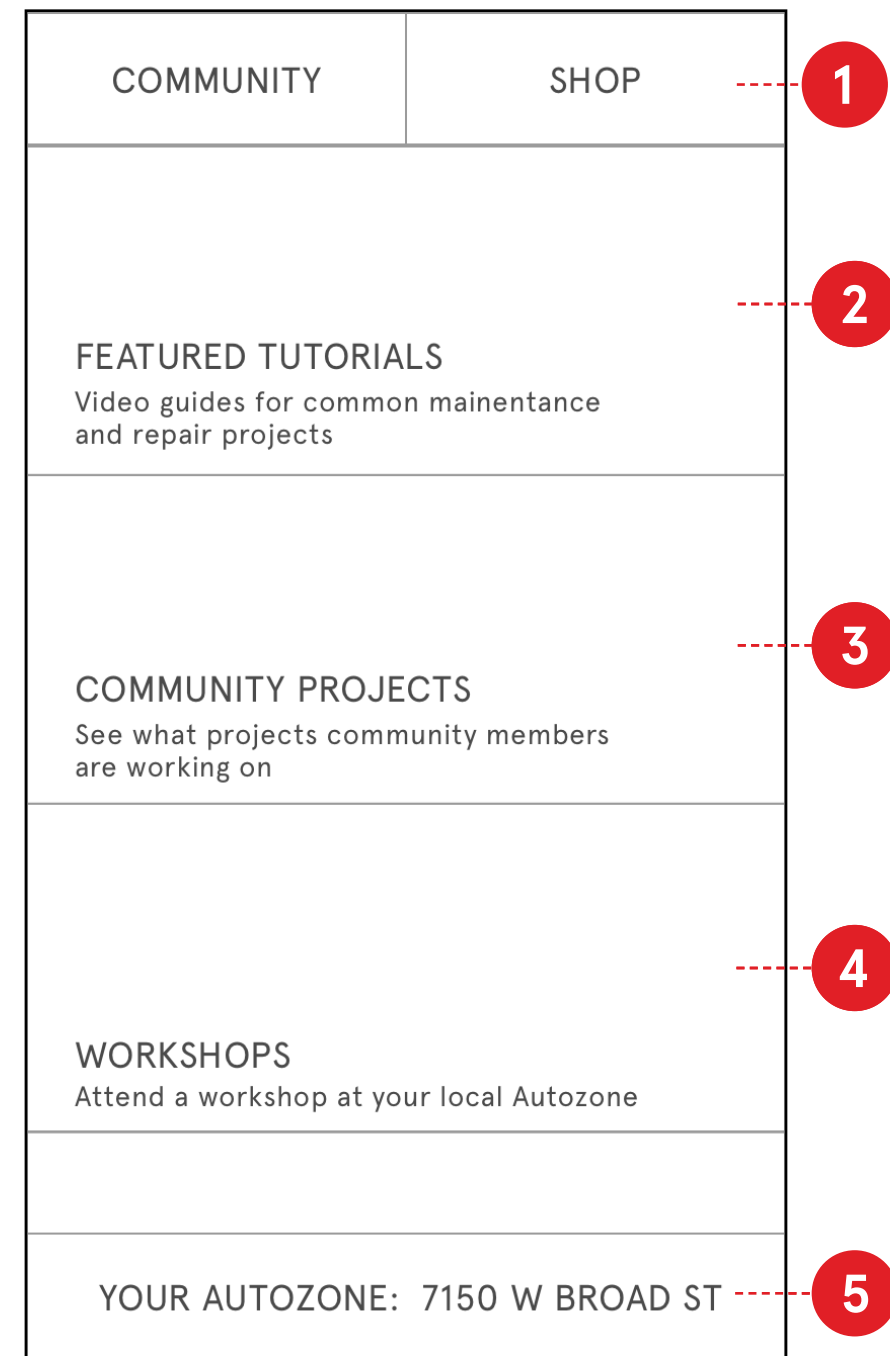


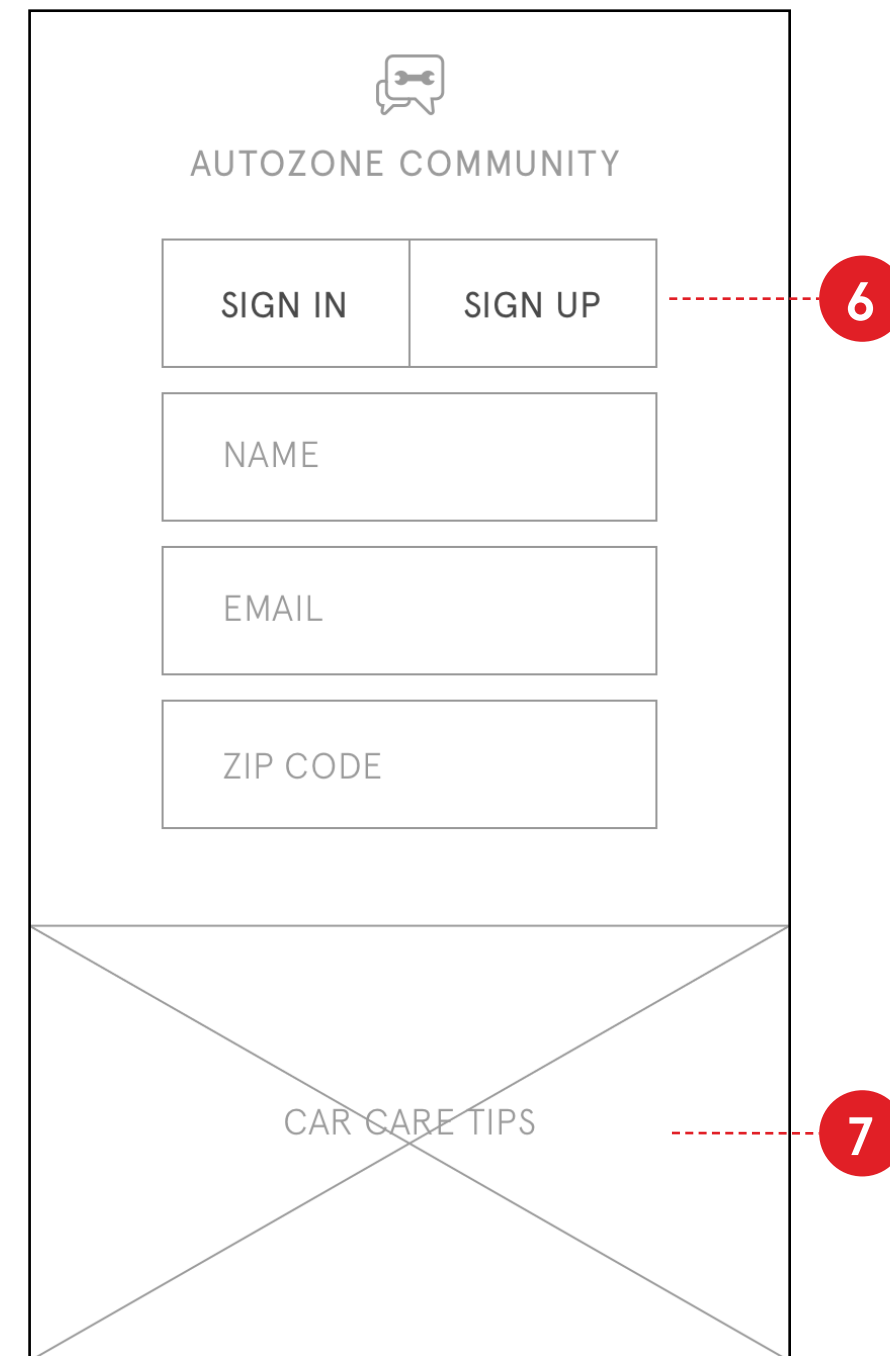
SIGN IN + HOME SCREENS

COMMUNITY

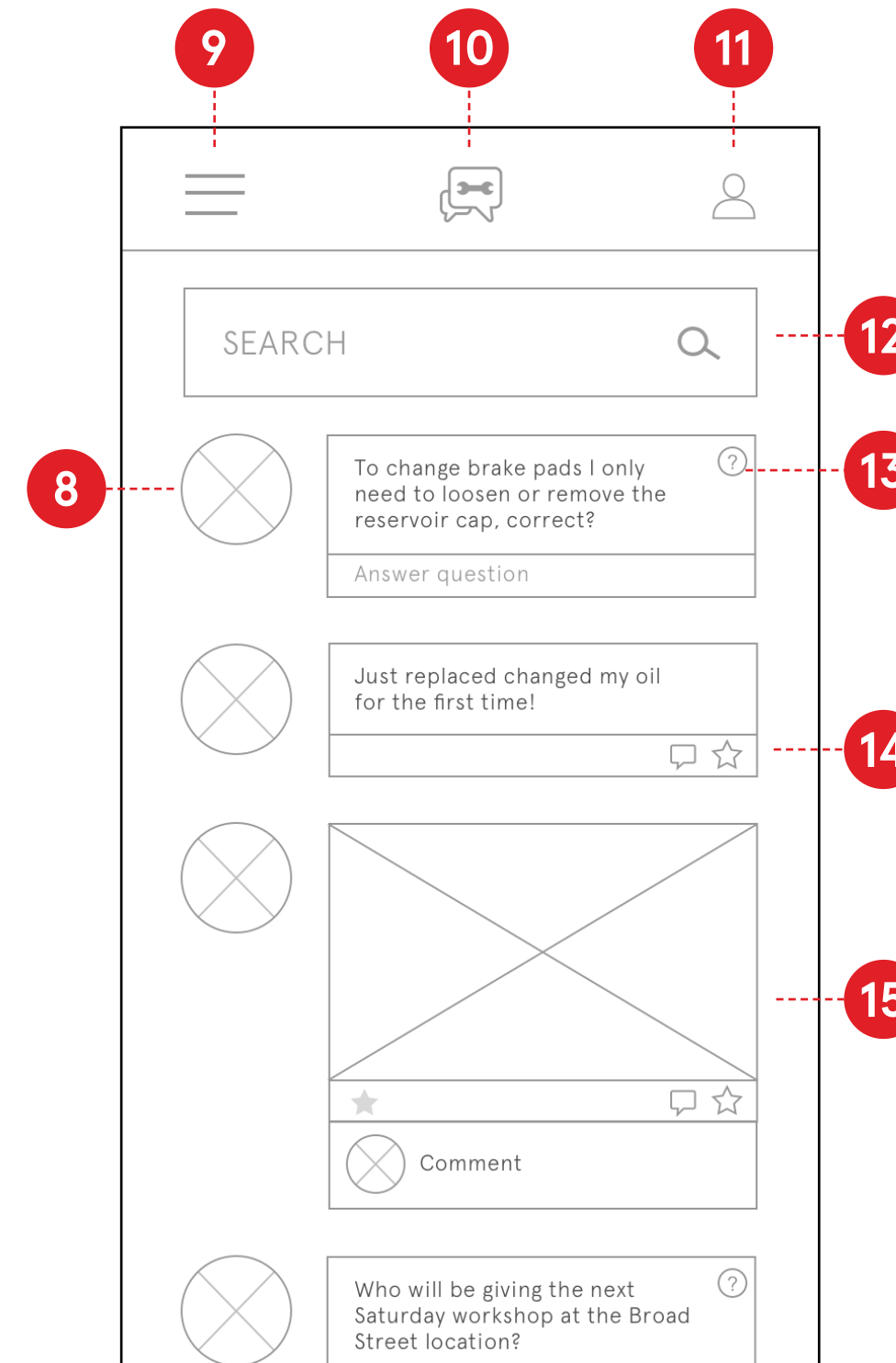
AUTOZONE.COM HOME



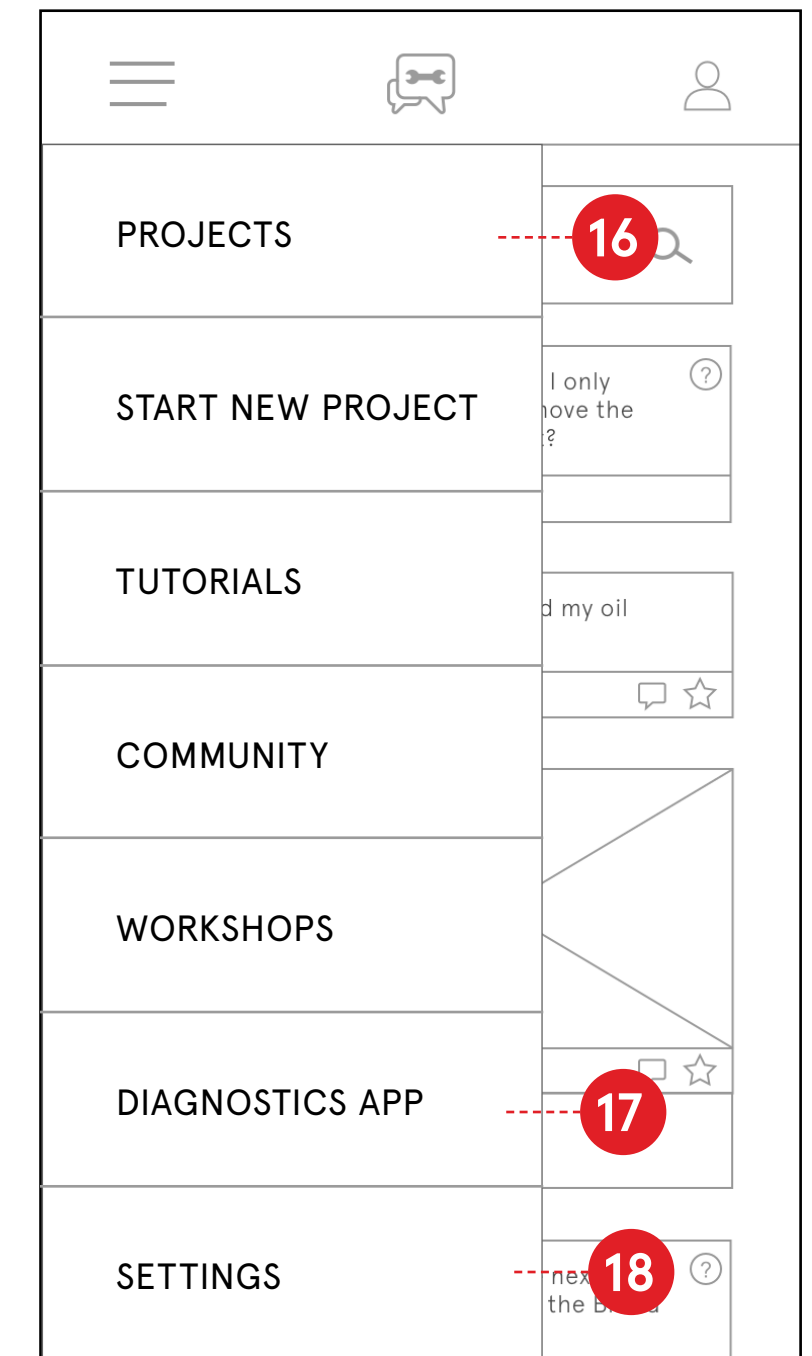
AUTOZONE COMMUNITY SIGN IN



AUTOZONE COMMUNITY HOME - NEWS FEED



SIDE MENU



1 AUTOZONE.COM MAIN MENU

Simplified the top navigation to Community and Shop to give more attention to the Community platform

4 WORKSHOPS

See schedule for weekly workshops held at Autozone, each week a different topic

2 TUTORIALS

Featured tutorials for the week's most popular project

5 LOCATION

If location services are turned on, will show closest Autozone

3 PROJECTS

Preview of the projects that members of user's local community are working on

6 SIGN IN/UP

Log in or create an account for the Community platform

7 CAR CARE TIPS

Scrolling cards of simple car maintenance tips, introduction to features and benefits of Autozone Community

8 PROFILE

Profile picture of member, links to their profile page

9 MENU

Opens side menu

10 HOME

Symbol of Autozone Community, links to home screen - the news feed

11 USER PROFILE

Links to profile, user name, car and expertise level, user can edit contact information and expertise level

12 SEARCH

Search within the news feed to find past questions or comments

13 QUESTION POST

Members can tag a post as a question to solicit feedback and responses from other members

14 COMMENT POST

General comments, can be liked with the star icon (☆) or commented on

15 IMAGE POST

Post questions or comments with images of car for reference

16 SIDE MENU

Full menu of features available

17 DIAGNOSTICS APP

Link to download Autozone's diagnostics app - helps user identify car problem

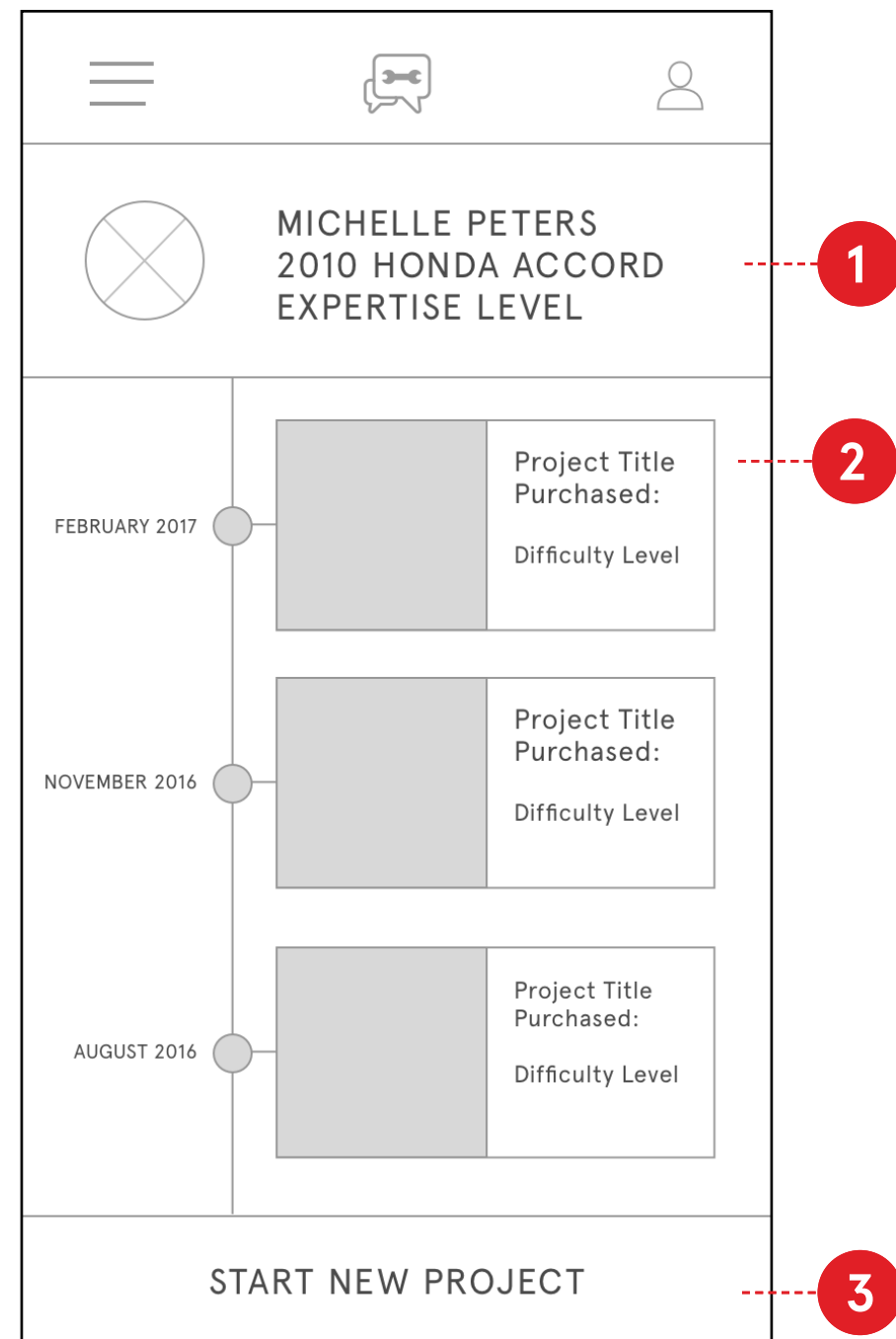
18 SETTINGS

Change contact info, notifications and expertise level

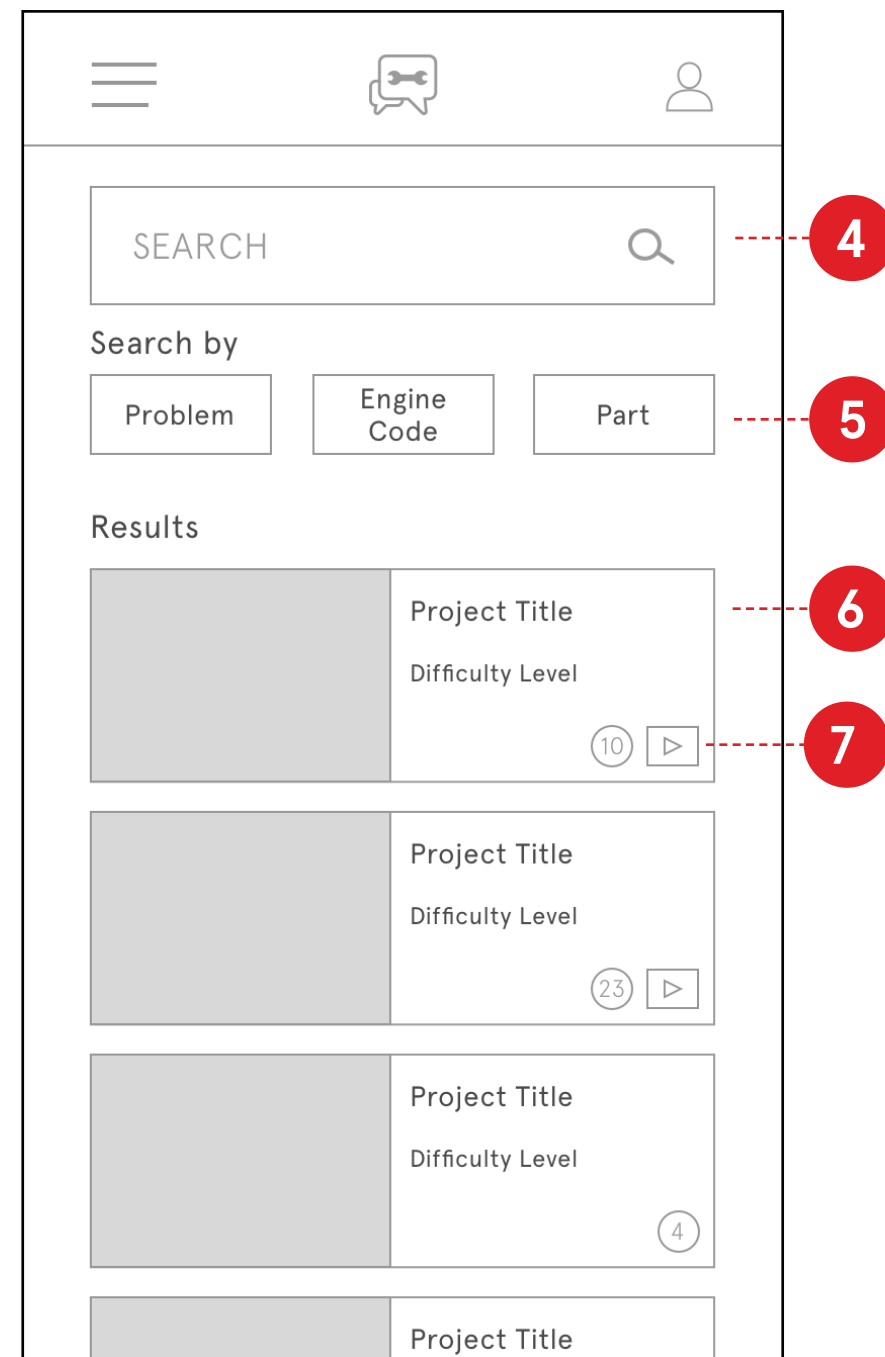
START + TRACK PROJECTS

COMMUNITY

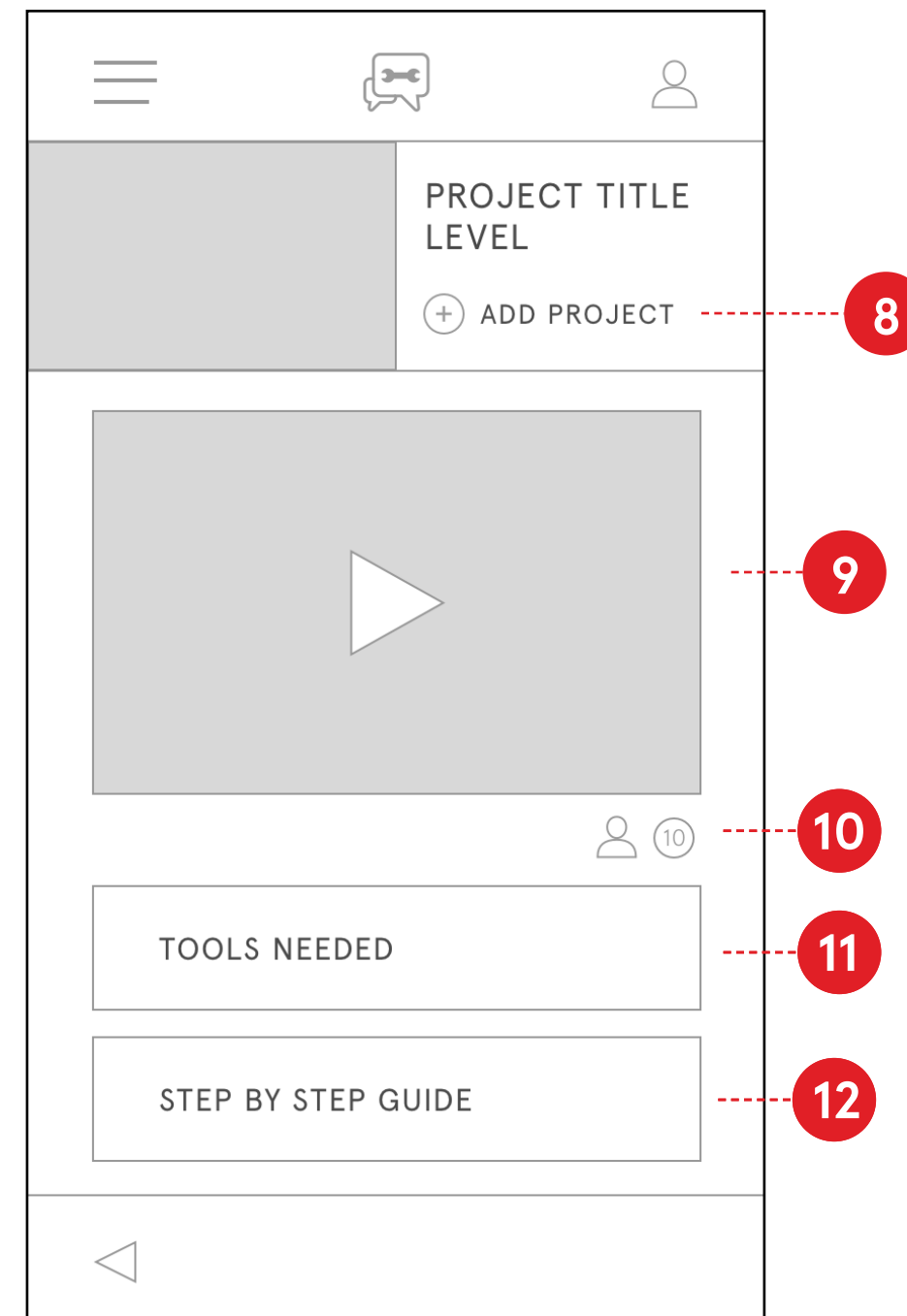
USER'S PROJECTS



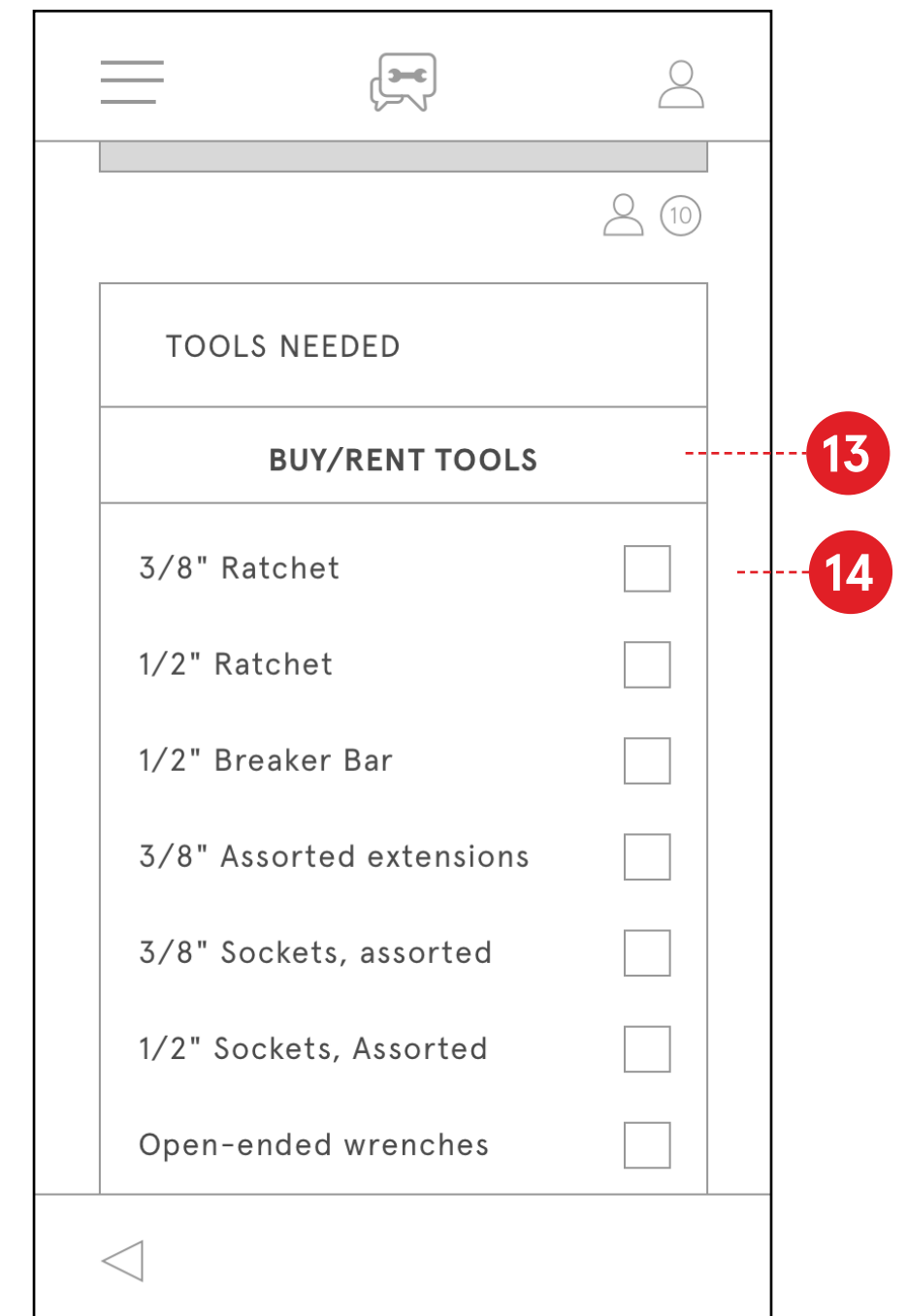
START NEW PROJECT



PROJECT PAGE



PROJECT PAGE TOOLS CHECKLIST



1 USER INFO

User name, car make and model and expertise level (Trainee to Pro). Expertise level is selected when creating a profile

2 PROJECT CARD

User's completed projects and in-progress projects: shows date of completion, title, items purchased for project and difficulty

3 NEW PROJECT

Link to start a new project - goes to search page

4 SEARCH

Search by keyword to find project guide

5 SEARCH FILTERS

Select filter to narrow down search results

6 PROJECT CARD

Project search results, shows title, difficulty level and image of project

7 PROJECT ICONS

Indicate how many members have completed the project and if it has a video tutorial

8 ADD PROJECT

Add project to user's in-progress page

9 TUTORIAL VIDEO

Video step by step guide

10 MEMBER COUNT

Shows members who have completed project - click to expand and message them

11 TOOLS LIST

Tools and supplies that will be needed for project

12 PROJECT GUIDES

Step by step instructions

13 SHOP

Link to purchase tools and supplies specific to selected project

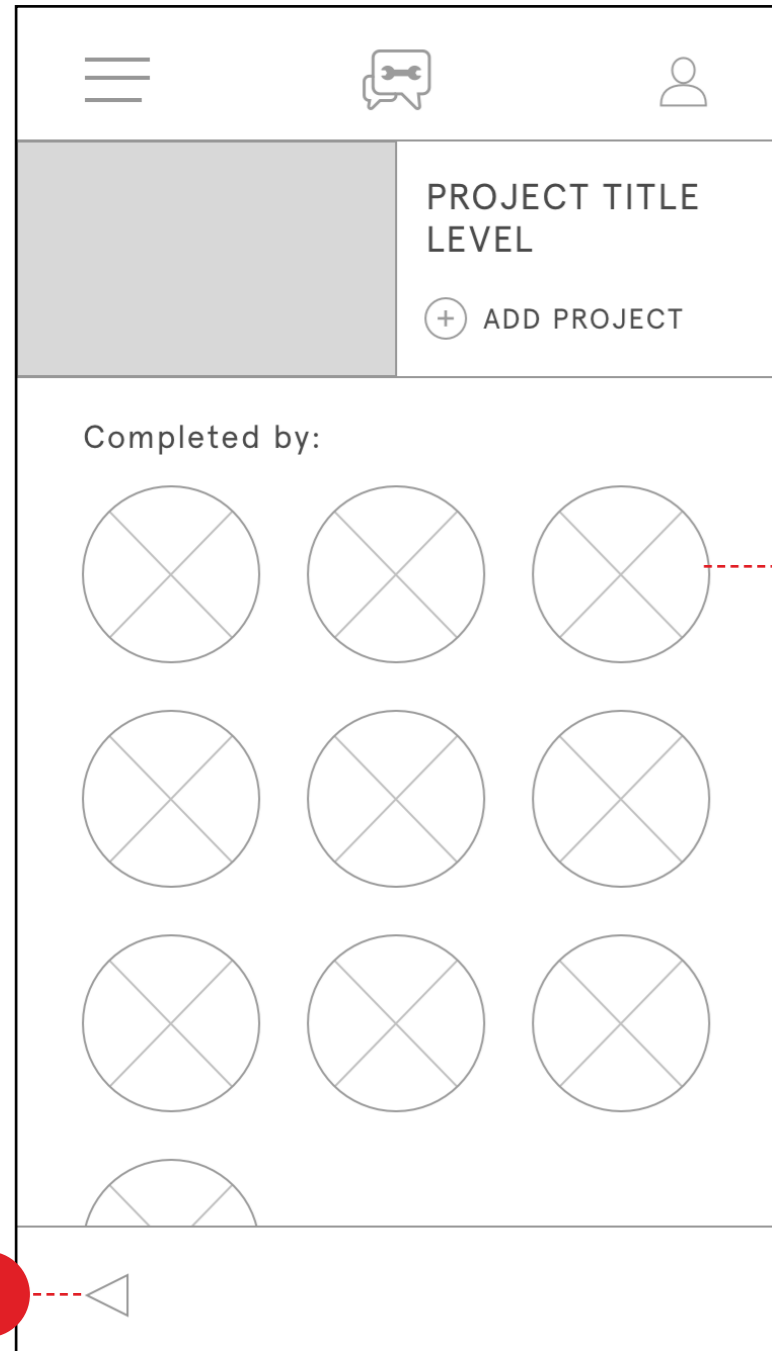
14 TOOLS CHECKLIST

Check off tools

MESSAGE MEMBERS

COMMUNITY

PROJECT PAGE COMPLETED BY MEMBERS

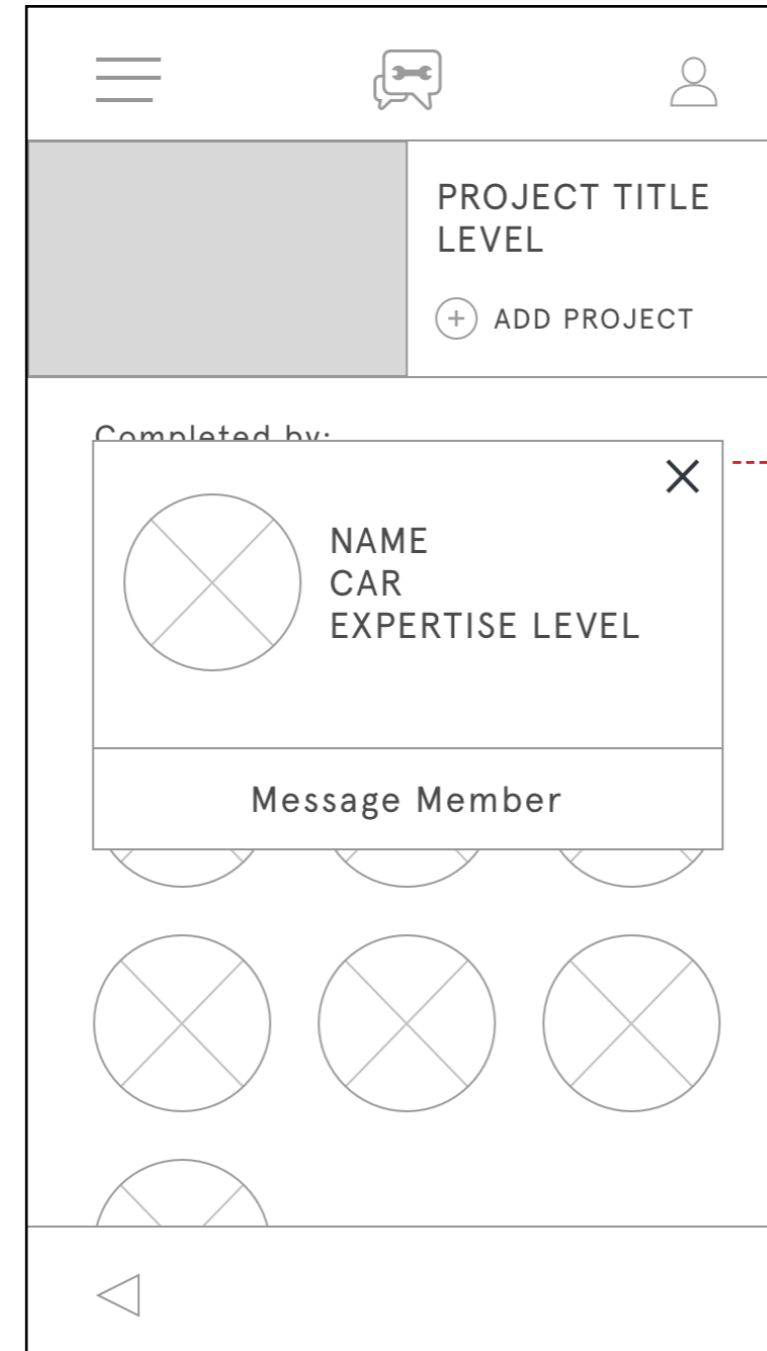


1 MEMBER PROFILE

Profile picture of member, click for option to message them

2 BACK

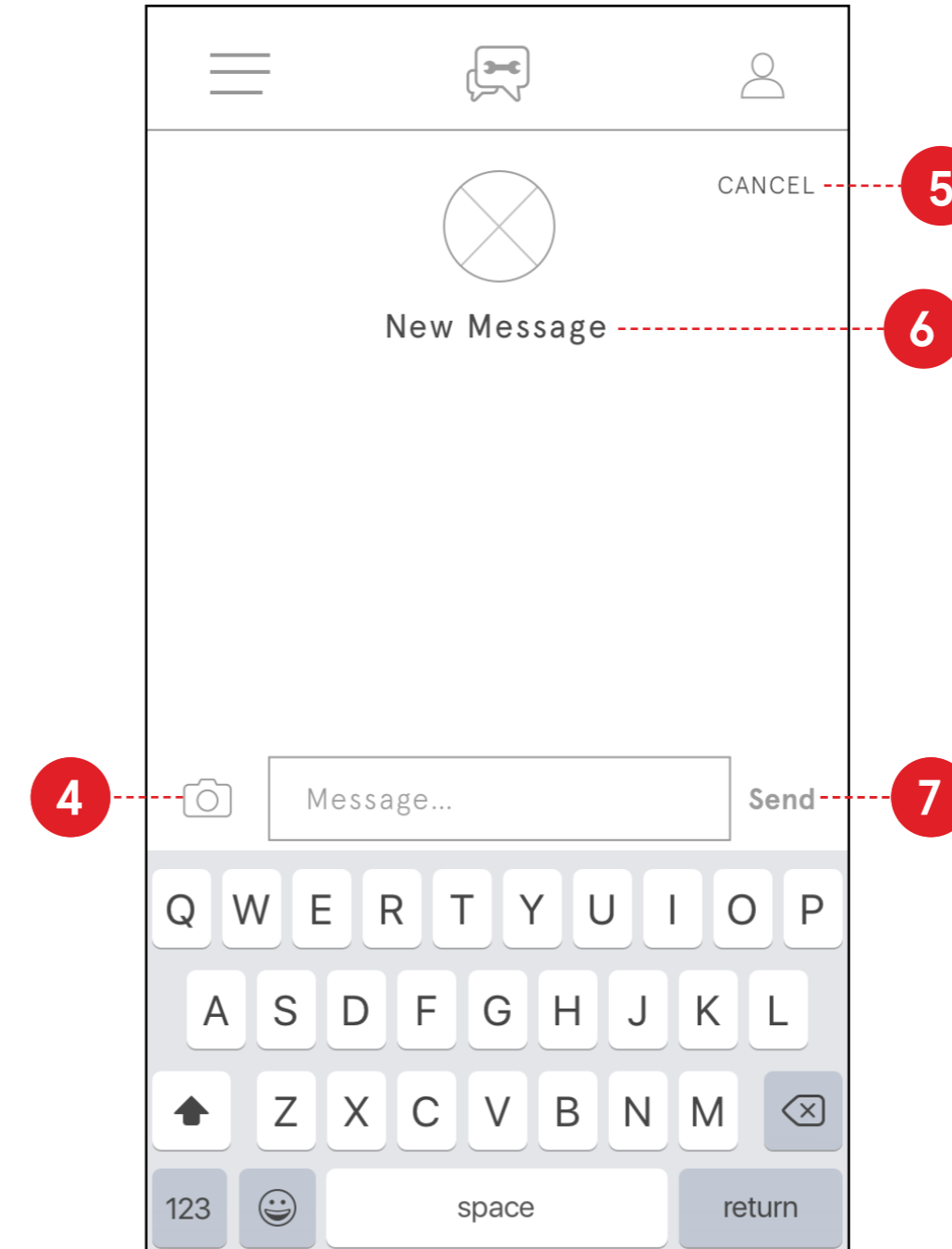
PROJECT PAGE MESSAGE MEMBER



3 MESSAGE CARD

Message a member to ask questions about the project

NEW MESSAGE



4 ATTACH IMAGE

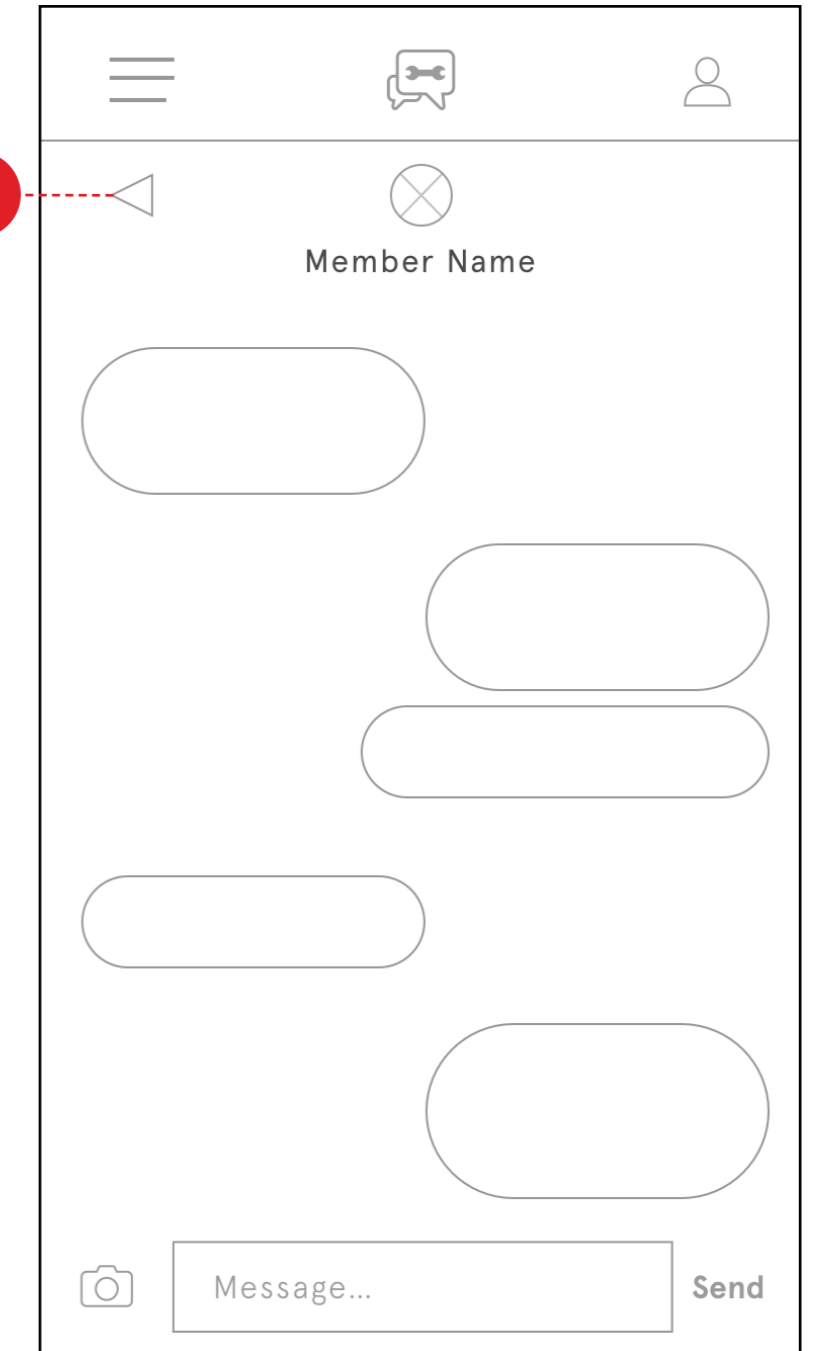
6 NEW MESSAGE

Appears when messaging a member for the first time

5 CANCEL/BACK

7 SEND MESSAGE

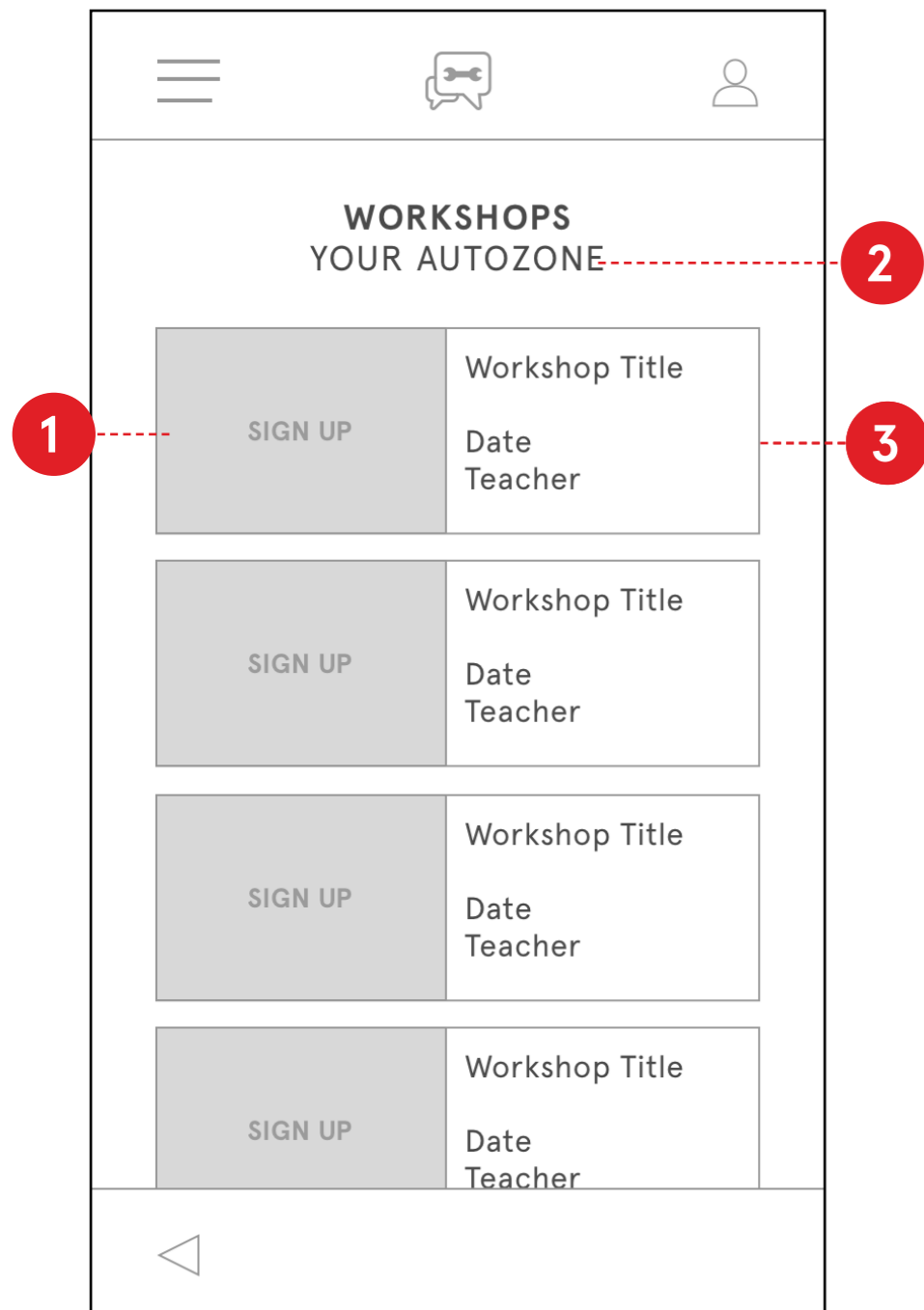
MESSAGES WITH MEMBER



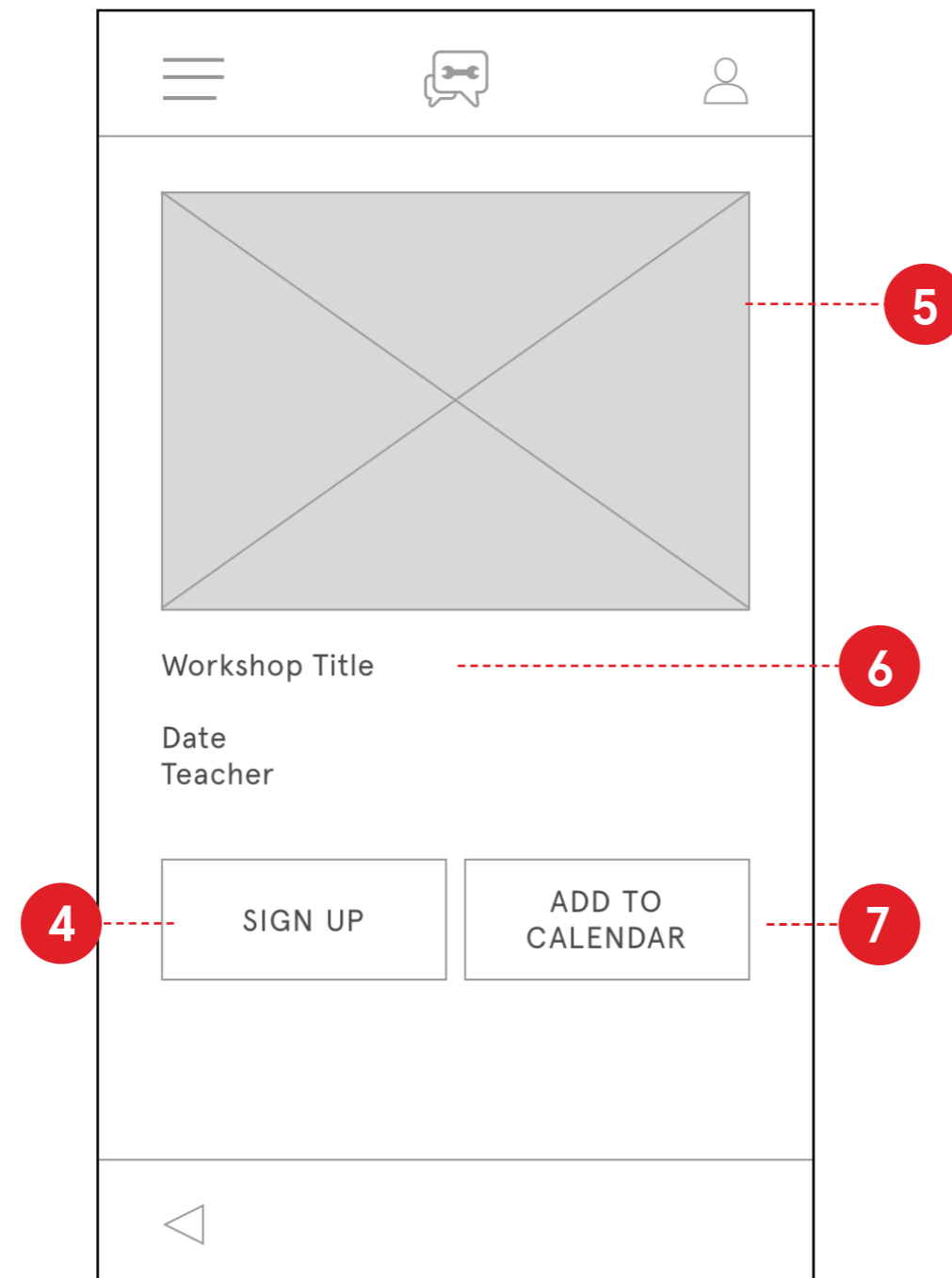
8 BACK

Back to project page

WORKSHOP CALENDAR



WORKSHOP DETAILS PAGE



TUTORIAL VIDEO



1 IMAGE/SIGN UP

Thumbnail image for workshop, click to sign up or get more information

2 LOCATION

User's closest Autozone or designated location

3 WORKSHOP CARD

Shows title and teacher of workshop

4 SIGN UP

5 WORKSHOP IMAGE

6 WORKSHOP INFO

Information about workshop content, teacher and time

7 CALENDAR

Set reminder through the platform or add to phone/Google calendar

8 DONE/BACK

9 TIMELINE

Tap to open timeline, shows steps associated with project

10 TIME

Length of video

11 OPEN TIMELINE

Videos are tagged by step, tap numbers to skip to that step